

**Walk description:**

This is a short day out, or even a pleasant way to spend a lovely summer evening if staying nearby in the area; taking in fields, a beautiful birch wood and easy moorland walking with terrific views of the surrounding area.

**Access information:**

Turn off the main A82 Inverness - Fort William road at Lewiston by Borlum Bridge, grid ref 513291, signposted to Bunloit. Go almost to the very end of this dead-end road, where you will find a small car park on your right. This road is steep with some exciting hairpin bends.

**Additional info:**

Near the car park there is a pottery which is well worth a visit. In nearby Drumnadrochit there are local services and a tourist office; there is also the "official" Loch Ness Monster Exhibition. Also nearby is Urquhart Castle which is impressively situated overlooking Loch Ness.

**Start grid ref:** NH490236**OS map:** Explorer 416:  
Inverness, Loch Ness & Culloden**Walk length:** 4.97 miles**Duration:** 200 minutes**Height gain:** 420 metres**Contributor:** Albert Higginbottom**Weathercall:** Get a local forecast for this walk.

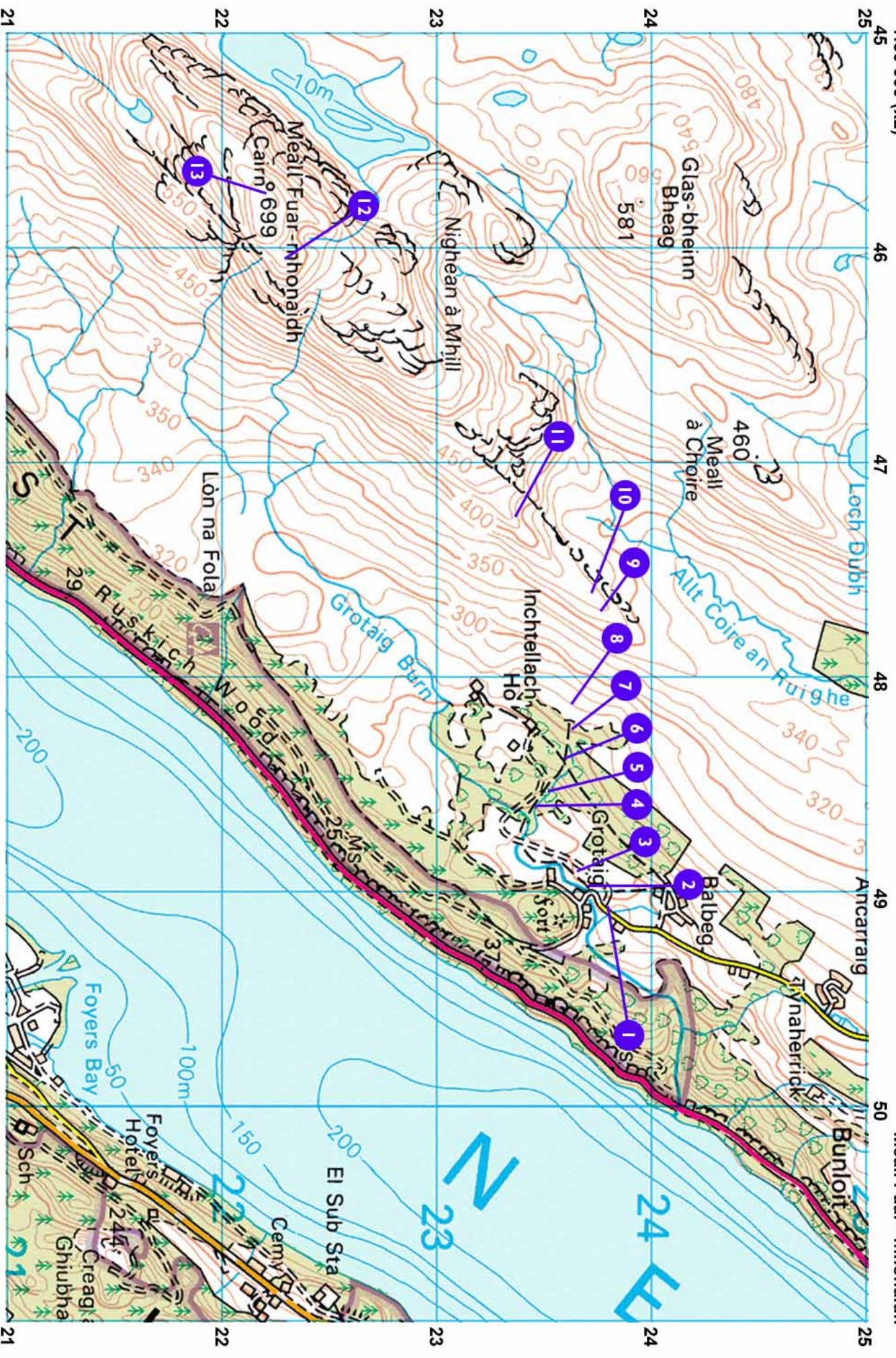
Call 09068 020 525 from your phone or mobile. Or dial 09065 22 45 06 from your fax machine to receive a fax.  
09068 calls 60p/min, 09065 calls £1.50p/min.

**Features:**

- Hills or Fells
- Mountains
- Lake/Loch
- Wildlife
- Birds
- Great Views
- Gift Shop
- Moor
- Woodland






1:50 000 (x2)



Reproduced from the Ordnance Survey maps with the permission of the Controller of Her Majesty's Stationery Office © Crown Copyright



- 1**  Leave the car park and continue along the tarmac road. (Grid ref: 490236)
- 2**  Turn off the tarmac road just before a bridge going over the river and go up and through a gate. (Grid ref: 490236)
- 3**  Keep going on an overgrown path close to a fence, which takes you through some fields towards the wood. (Grid ref: 489236)
- 4**  When you get into the birch wood you will come to a farm track which is crossed by means of two stiles. (Grid ref: 486234)
- 5**  After crossing by the stiles the path continues by the side of a river, which as you climb higher becomes a steep drop into the gorge on your left. (Grid ref: 485235)
- 6**  When you reach a farm track turn left and after a few metres you turn right again by a small burn. (Grid ref: 484236)
- 7**  You eventually go along the wooden walkway through a lovely part of the birch wood. (Grid ref: 484236)
- 8**  The path comes out of the wood and onto open moorland covered in heather. You follow this path till you come to a deer-fence. (Grid ref: 483236)
- 9**  You cross a stile over the deer-fence to gain access to the path leading up this gentle ridge. (Grid ref: 477239)
- 10**  As you go up the ridge towards the summit you start to get fine views of Loch Ness and surrounding area, which improve the higher you get. (Grid ref: 477239)

- 11**  This is a view looking back down part of the ridge, taking in Loch Ness and the Moray Firth. (Grid ref: 472234)
- 12**  View from near the top of the ridge looking down the Great Glen towards Loch Oich and Loch Lochy. (Grid ref: 461223)
- 13**  At last the summit cairn and (fingers crossed) some lovely views all round. You now return by the same route. (Grid ref: 458222)