

Walk description:

A very enjoyable high-level walk with, in good weather, extensive views to north, east and south. At one point you can see almost the full twenty miles of Loch Ness. The paths are of two kinds, older, wider forest tracks linked by new and narrower paths, the latter not yet (2003) bedded in and quite rough. The route undulates and zigzags quite a bit, adding to the mileage. In this direction there are no demanding climbs (walking the other way there are...), but the walk requires a degree of fitness. Boots are necessary for comfort on the rough paths.

Access information:

Turn off the A82 at Lewiston (513291) and follow the narrow country road to the new car park at the end of it (491238).

At Alltsigh obtain permission to park in the hostel car park.

The bus service Inverness - Fort Augustus stops at Alltsigh. There is no bus to Bunloit; but you can add four miles to the walk by walking up to Bunloit from the bus stop in Drumnadrochit, following the Great Glen Way marker-posts.

Start grid ref: NH491238**OS map:** Explorer 416:
Inverness, Loch Ness & Culloden**Walk length:** 5.59 miles**Duration:** 180 minutes**Height gain:** 175 metres**Contributor:** D.B. GRANT**Weathercall:** Get a local forecast for this walk.

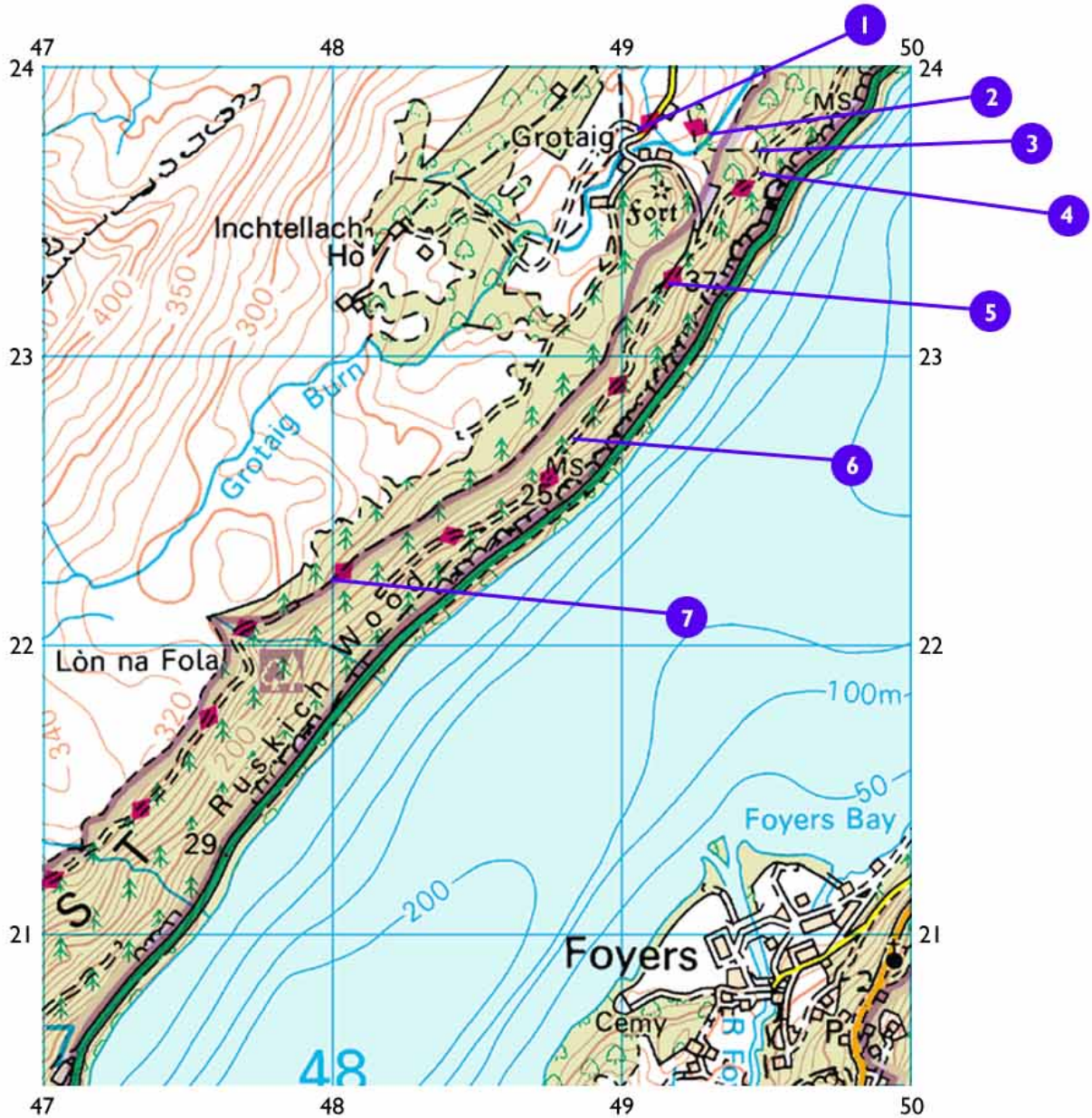
Call 09068 020 525 from your phone or mobile. Or dial 09065 22 45 06 from your fax machine to receive a fax.
09068 calls 60p/min, 09065 calls £1.50p/min.

Features:

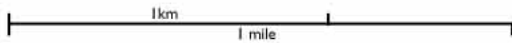
- Hills or Fells
- Mountains
- Lake/Loch
- Wildlife
- Birds
- Flowers
- Butterflies
- Woodland

1: 50 000 (x2)

Bunloit to Alltsigh (Great Glen Way) A

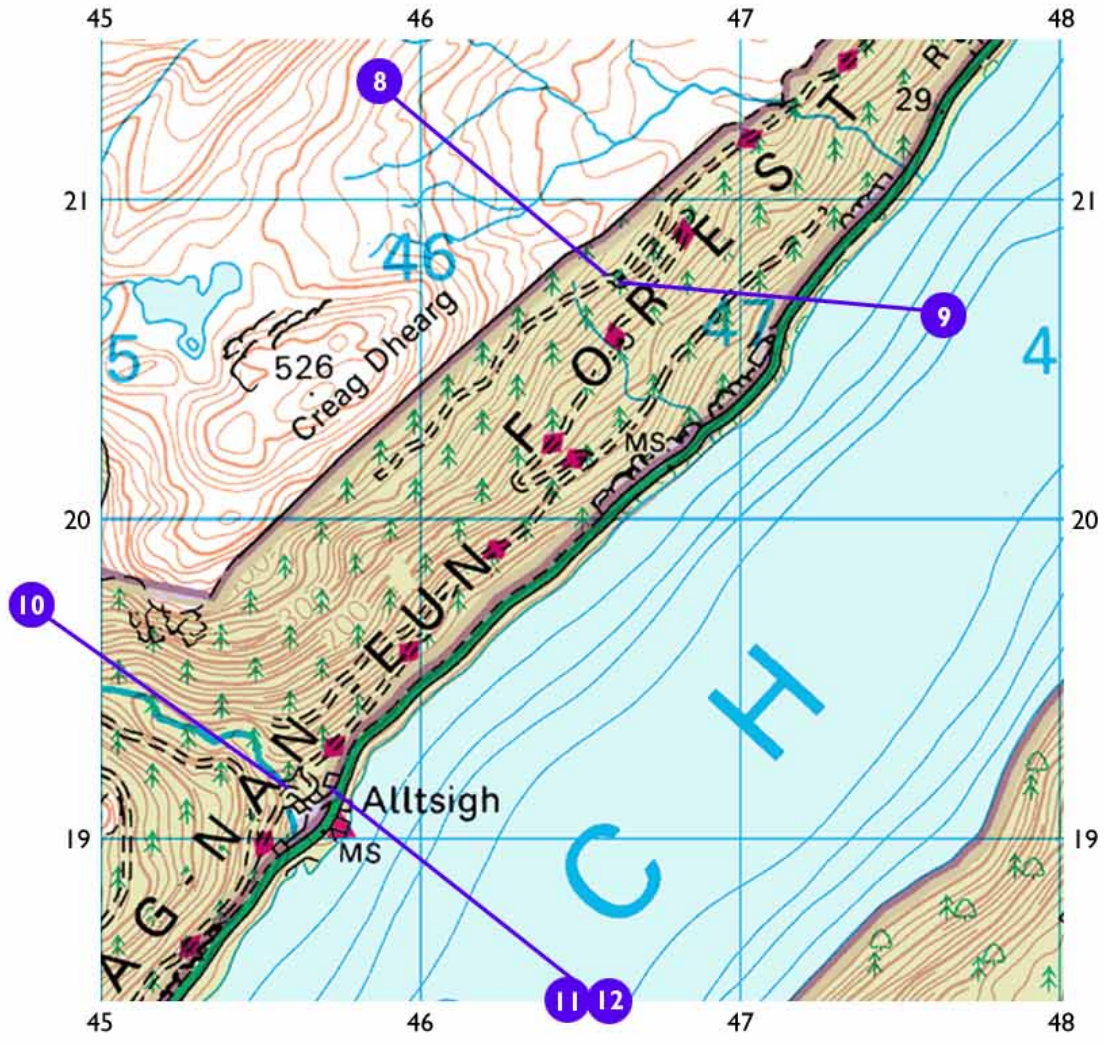


Reproduced from the Ordnance Survey maps with the permission of the Controller of Her Majesty's Stationery Office © Crown Copyright

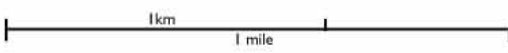


1: 50 000 (x2)

Bunloit to Alltsigh (Great Glen Way) B



Reproduced from the Ordnance Survey maps with the permission of the Controller of Her Majesty's Stationery Office © Crown Copyright



- 1** The car park; follow the sign for Great Glen Walk through a gate and continue to another gate at a burn crossing. (Grid ref: 491238)
- 2** Across the burn you go through two more gates to a junction. (Grid ref: 493238)
- 3** Walk straight on here to a viewpoint overlooking Loch Ness. (Grid ref: 495237)
- 4** Continuing after the viewpoint, you reach a fork. (Grid ref: 495236)
- 5** Keep right here, on a narrower path, to another viewpoint. (Grid ref: 492233)
- 6** Here is the view across the loch to Foyers (and also south to Fort Augustus - this section offers a succession of views). The narrow path joins a broader track. (Grid ref: 488228)
- 7** Along this broad track you arrive at a T-junction. (Grid ref: 480223)
- 8** From here it's downhill all the way, first zigzagging through mature forest. (Grid ref: 466207)
- 9** More views; when you get down to near the level of the loch you are near Alltsigh and you come to a junction. (Grid ref: 466207)
- 10** At the junction turn left (signed 'Alltsigh'). Before doing so you might like to look at the waterfall at the figure in the photo. You go through a gate and on to the A82. (Grid ref: 456191)

11 On the A82, Alltsigh is a few metres to your right. (Grid ref: 457191)

12 Alltsigh Youth Hostel. (Grid ref: 457190)